

# Crane wagon



Design and production of complete wagons fitted with optimized capacities cranes for:

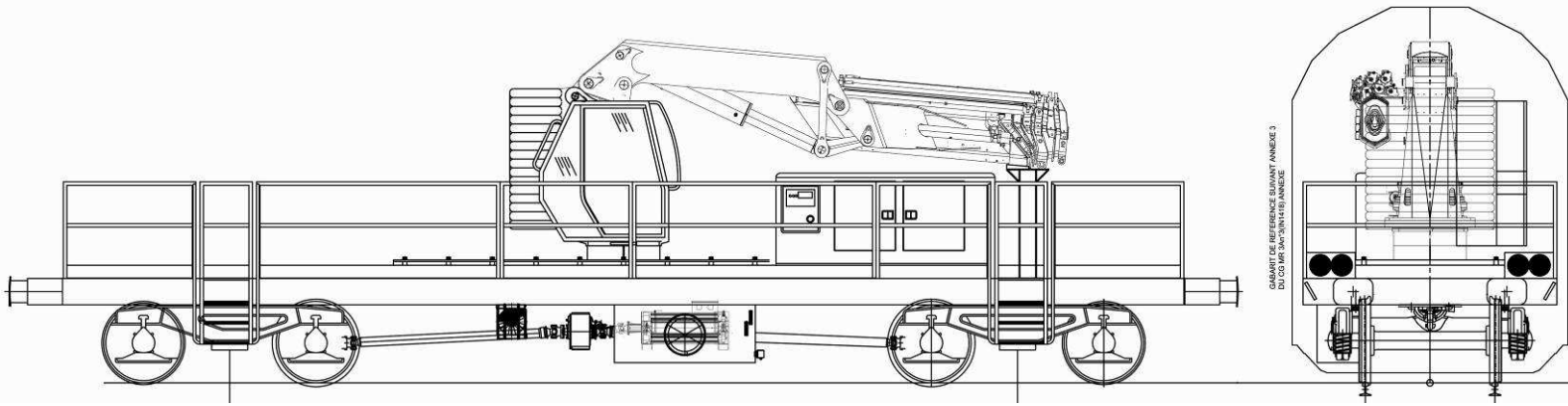
- ✓ Track laying or catenary systems installation / renovation
- ✓ Feeding winding-up or drum carrier units
- ✓ Work on civil engineering projects or structures
- ✓ Personnel lifting for overhead work with adapted baskets which complies with aerial lifts security standards

PVI's expertise and experience in the field of lifting equipment and their associated safety systems enable to offer:

- ✓ Needs and feasibility analysis
- ✓ Design studies for installation on an existing wagon or new base
- ✓ Stability studies and safe movement management (static or dynamic vehicle)
- ✓ Regulations and norms approvals
- ✓ Technical start-up assistance and maintenance program

To **preserve the environment** on your sites (noise and polluting emissions) and to **protect staff** working in confined areas, **PVI offers electric drivelines** on its crane wagons.

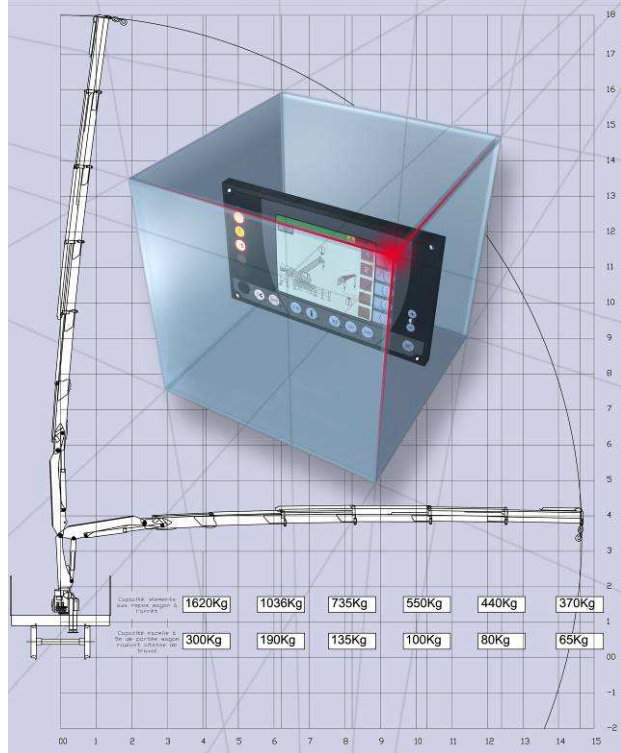




**Optimized crane installation**

PVI handles:

- A wagon stability study
- Wind resistance calculation
- Development of mobile balance weights when required
- Validation of static and dynamic axle loading
- Calculations of load support and distribution on the structure of the wagon chassis frame
- Installation of the structure on the wagon
- Stability confirmation testing and weighing on a dedicated test site for heavy lifting (including canted elevation)
- Associated mandatory approvals



**Safety system management**

Work area management for safe working on partially closed lines

Implementation of customized electronic safety systems (3D virtual workspace) enabling risk-free deployment of the structures, both statically or dynamically

Rated capacity indicators using the same technologies as those developed for lifting machines

**PVI Ferroviaire**

Rue Maison Rouge - BP 40091 GRETZ ARMAINVILLIERS - 77223 TOURNAN CEDEX - FRANCE  
 Tel. (+33)1 64 42 14 08 - Fax (+33)1 64 07 19 04 - Email : ferroviaire@pvi.biz